



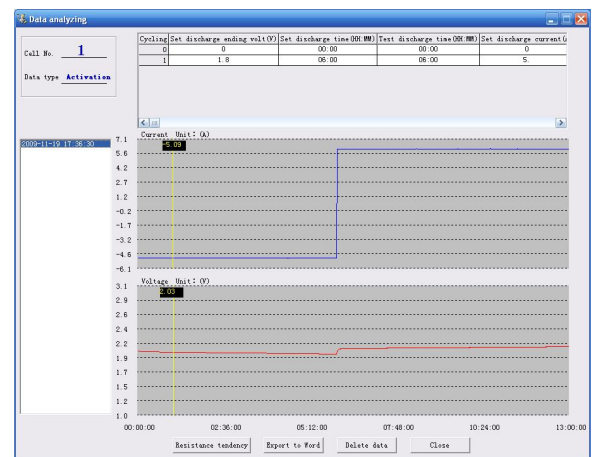
## LB-1000 Battery Charger/Discharger

**Eagle Eye LB-1000** is a compact unit for daily battery maintenance. It offers 3 complete solutions: battery charger, battery discharger and battery activator, which will facilitate your battery maintenance program. These three functions could be used individually or comprehensively. When used comprehensively, lag-out battery will experience low-volt constant current charging and discharging of single or multi-cell batteries (1~99A). By activating the disabled Active Material of the battery electrode plate, it amends the battery malfunction caused by chemical failure and thus boosts the capacity of an old battery. Activation curve and certain parameters (e.g.: voltage and resistance) will display on screen as activation ends. Battery activation is very significant for improving your batteries health. However, it is important to know that not all weak batteries could be activated by LB-1000. It can only amend the weak batteries whose bad condition is caused by chemical malfunction instead of physical failure such as short-circuit of electrode plate.



### Features

- ◆ Small size, portable and user-oriented
- ◆ Applicable to single cell of 2V, 6V and 12V
- ◆ 3 functions in one: charging, discharging and activation
- ◆ These functions could be used separately or comprehensively
- ◆ Testing waveform playback function
- ◆ All-rounded and accurate testing results with vivid waveforms
- ◆ Able to charge/discharge single and multi-cell batteries
- ◆ Powerful Eagle Eye DataView software for testing data analyzing and report printing
- ◆ Long-time monitoring of the battery condition
- ◆ Safety circuits prevent damage to battery under test
- ◆ Direct USB drive for data transferring to PC
- ◆ Simple and fast for software update
- ◆ Helpful in restoring battery health



Management software for analyzing of  
Discharging, Charging and Activation



## Accessories



## Specification

- ◆ **Power supply:** AC220V/110V
- ◆ **LCD display:** 128\*64 pixels
- ◆ **Temperature:** 41°F ~ 122°F
- ◆ **Humidity:** 5% ~ 90%RH
- ◆ **Dimension:** 15.5 x 14.5 x 7.8 inches
- ◆ **Weight:** 22 lbs. (main unit)
- ◆ **CE marking:**  
 EN 61000-3-2:2006  
 EN55022:2006+A1:2007  
 EN55024:1998+A1:2001+A2:2003  
 EN 61000-3-3:1995+A1:2001+A2:2005

## Technical Specifications

Parameters	Measurement Mode	Resolution	Accuracy	
Charging current	1-100A (cell:2V) 1-30A (cell:12V) 1-30A(cell:6V)	1A	1%	
Discharge current	1-100A(cell:2V) 1-30A(cell:12V ) 1-30A(cell:6V)	1A	1%	
Total charging voltage	1.7-2.4V(2V) 10.2-15V(12V)	5.4-7.2V(6V)	0.1V	0.25%
Total discharging voltage	1.7-2.4V(2V) 10.2-15V(12V)	5.4-7.2V(6V)	0.1V	0.25%

## Contact EEPS

**Eagle Eye Power Solutions, LLC.**

4230 N. Oakland Ave. Milwaukee, WI 53211

TEL: 1-877-805 EEPS (3377) FAX: 1-414-962-3660

[www.eepowersolutions.com](http://www.eepowersolutions.com)

[info@eepowersolutions.com](mailto:info@eepowersolutions.com)